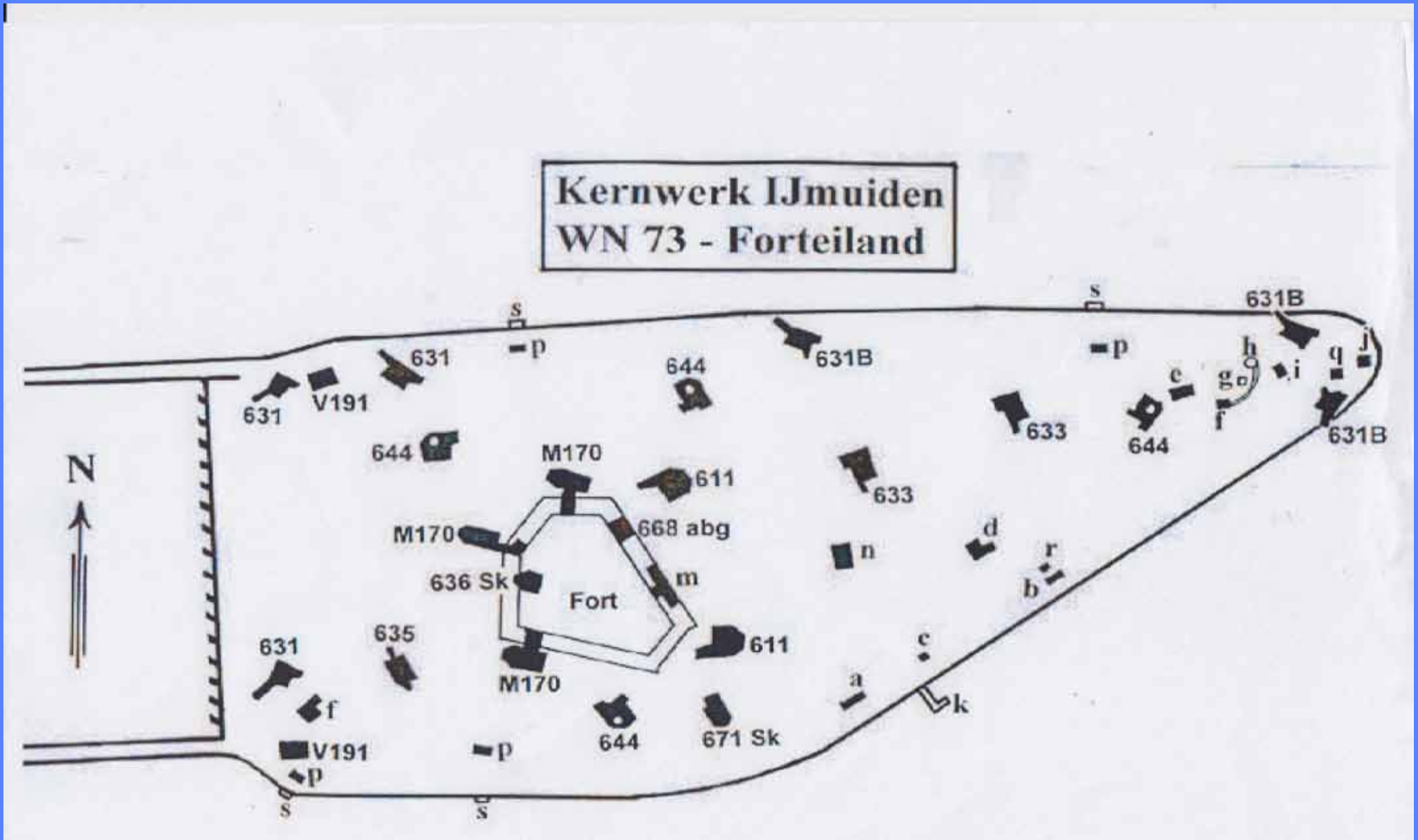
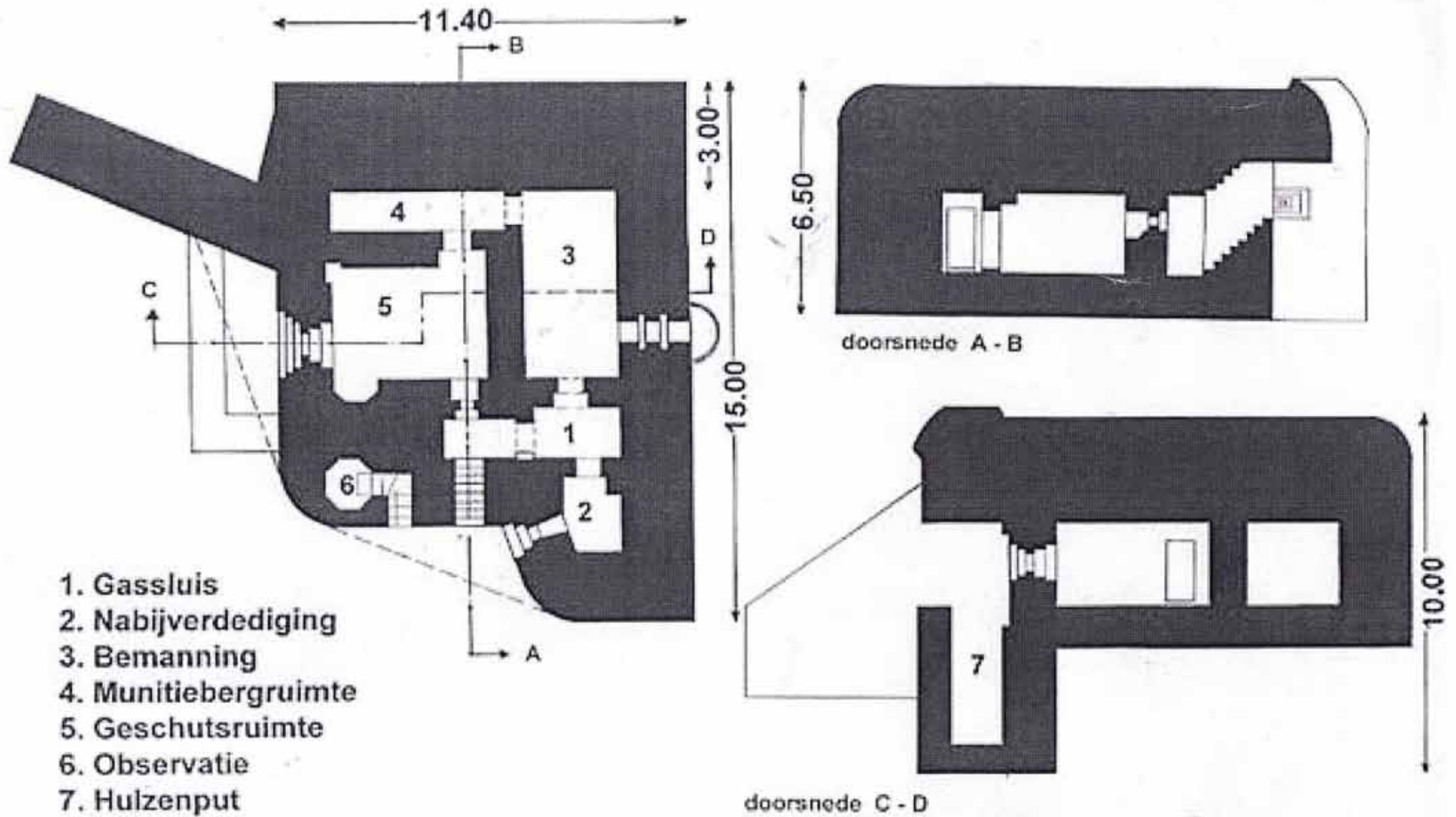


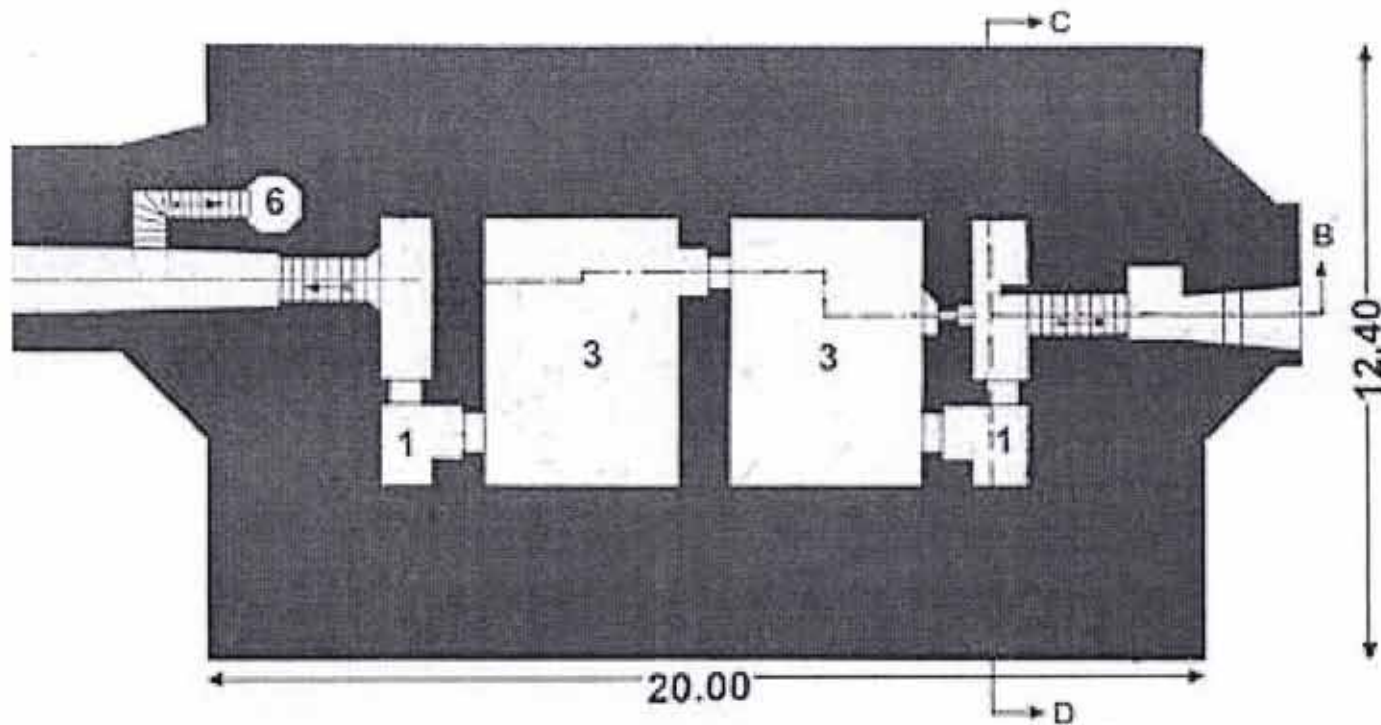
BUNKERS OP HET FORTEILAND IJMUIDEN



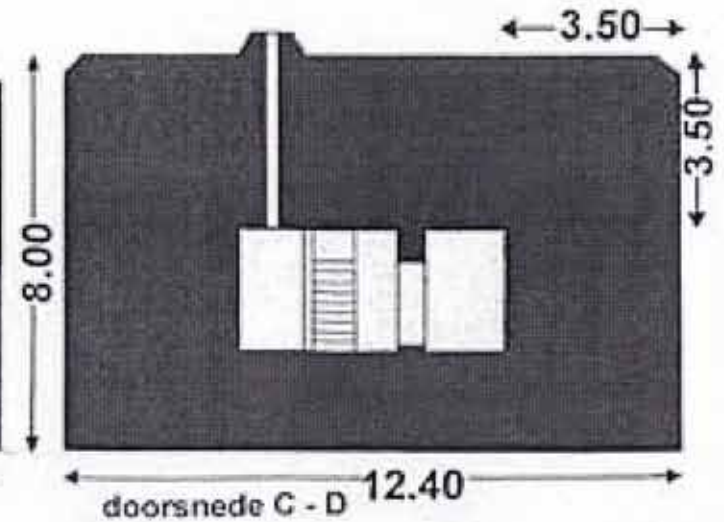
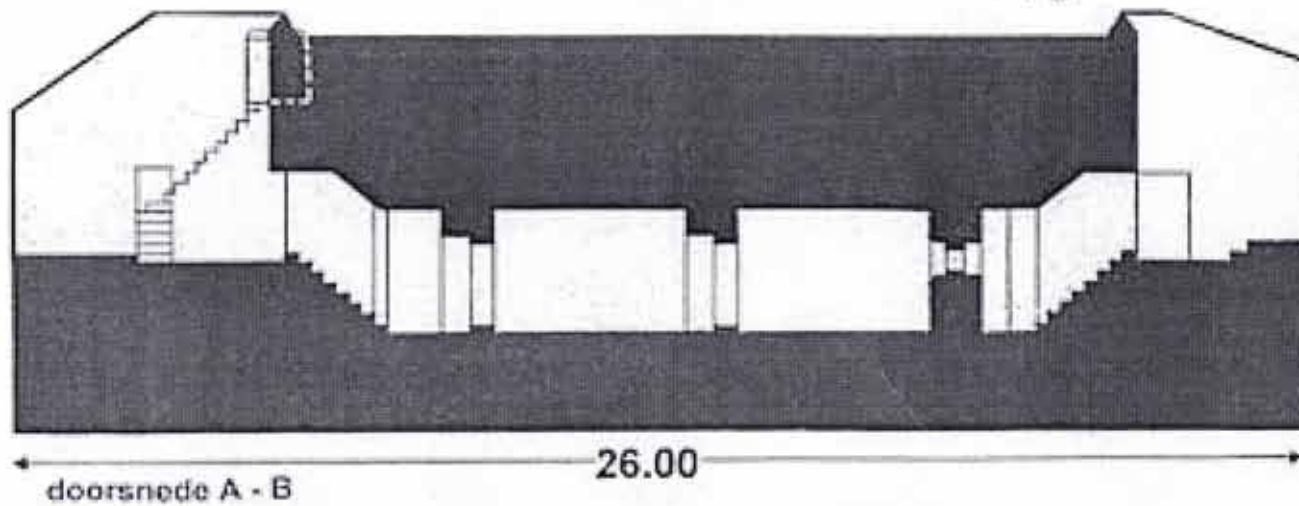
631 - Geschutsbunker voor 4.7 cm anti-tank geschut



635 - Personeelsonderkomen met 2 verblijfsruimten

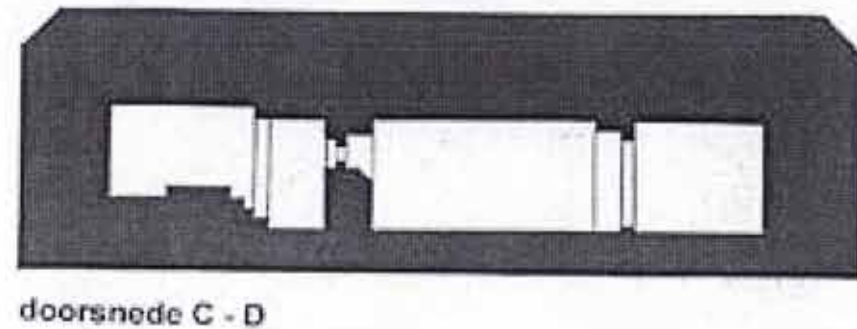
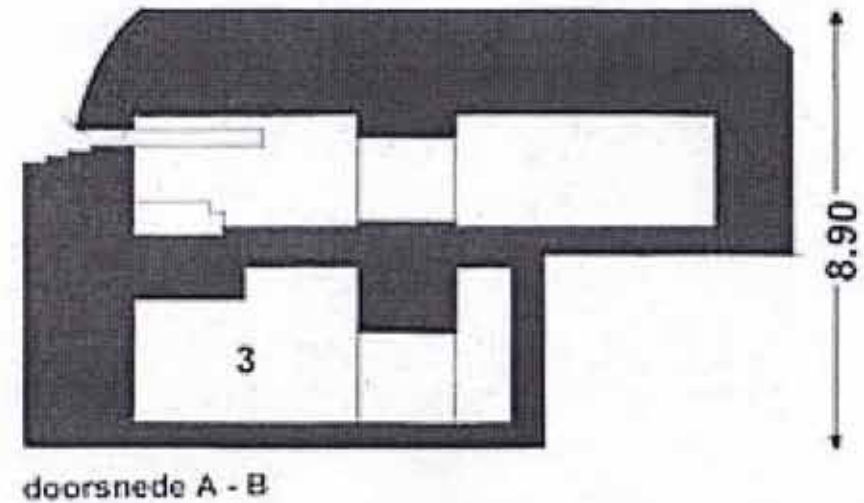
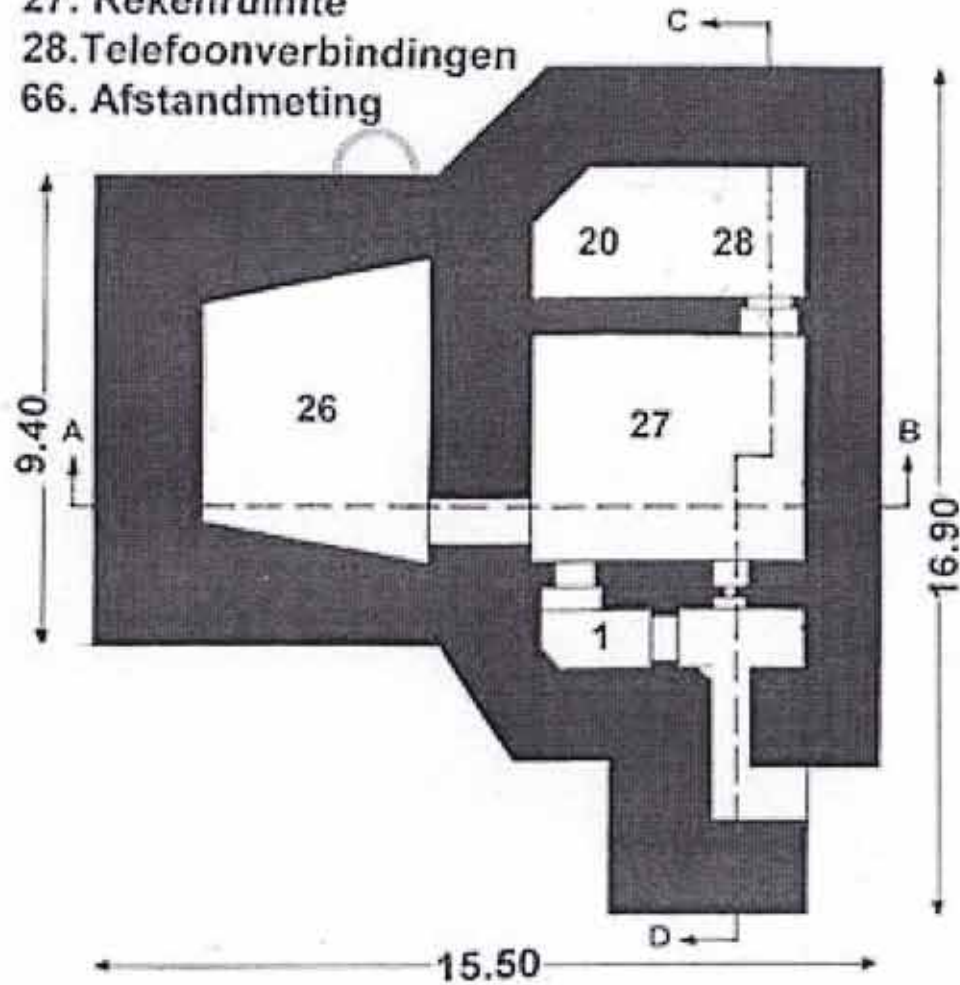


- 1. Gasluis
- 3. Bemanning
- 6. Observatie



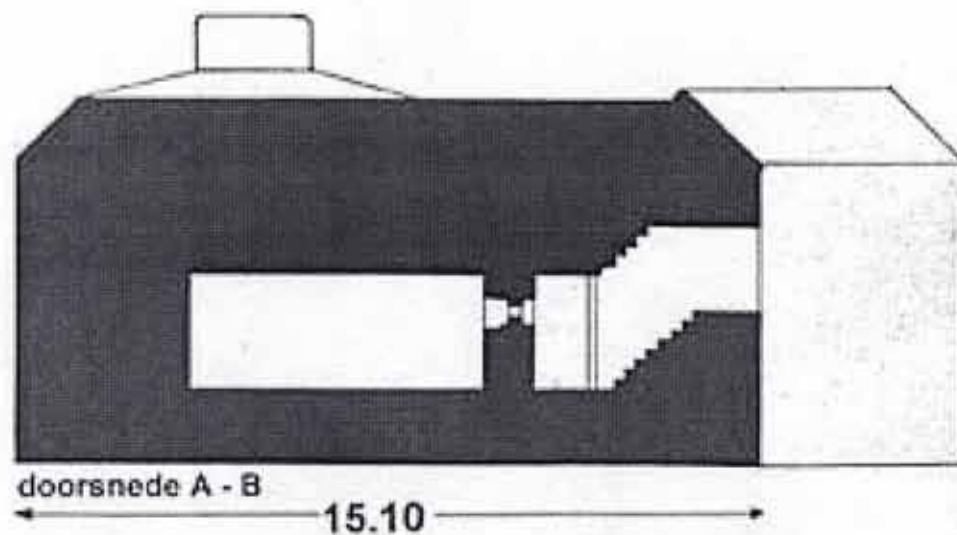
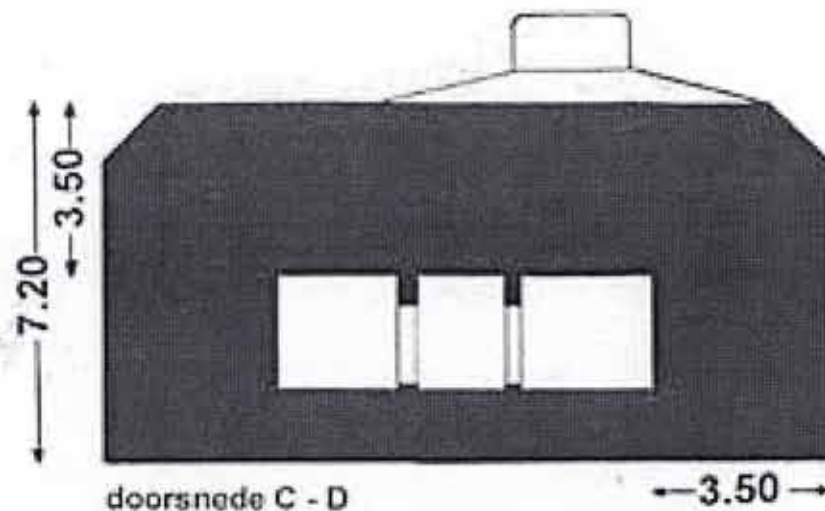
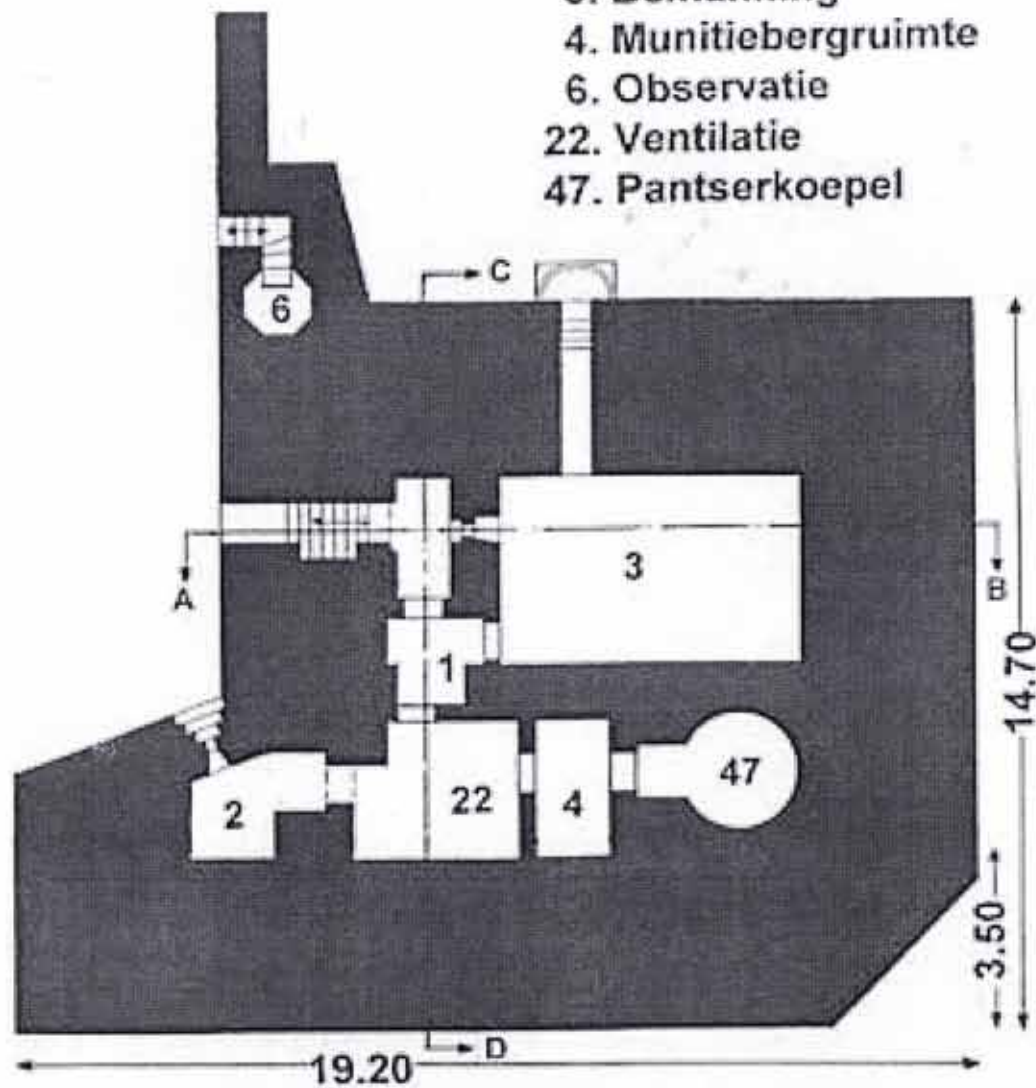
636 Sk - Vuurleidingsbunker

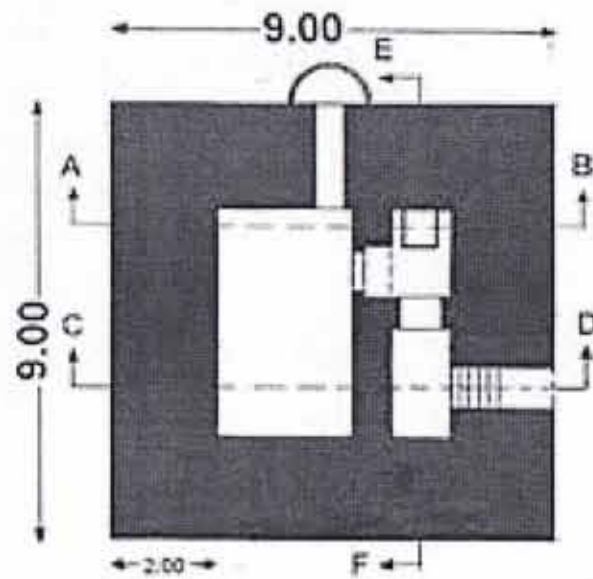
- 1. Gassluis
- 2. Nabijverdediging
- 3. Bemanning
- 20. Zend-Ontvangapparatuur
- 21. Verwarming
- 26. Waarnemingsruimte
- 27. Rekenruimte
- 28. Telefoonverbindingen
- 66. Afstandmeting



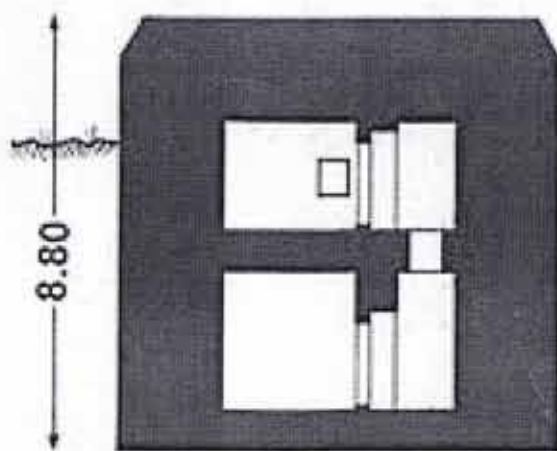
644 - Bunker met pantserkoepel met 6 schietgaten in 'A'

- 1. Gassluis
- 2. Nabijverdediging
- 3. Bemanning
- 4. Munitiebergruimte
- 6. Observatie
- 22. Ventilatie
- 47. Pantserkoepel

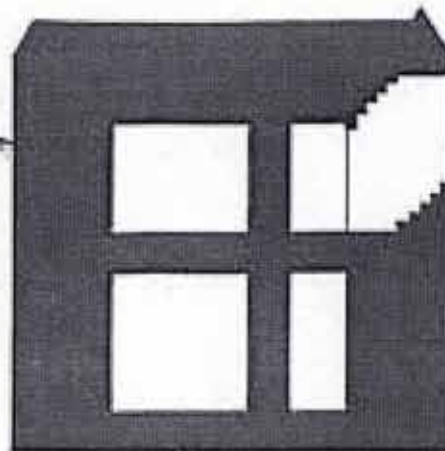




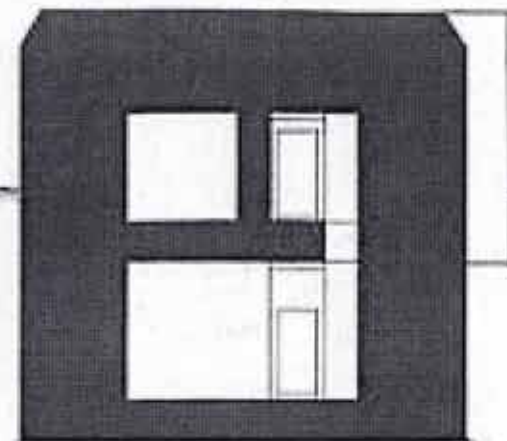
668 - Personeelsonderkomen voor 6 man



doorsnede A - B

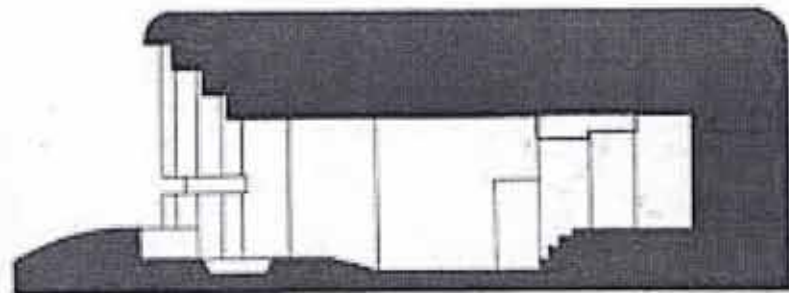


doorsnede C - D



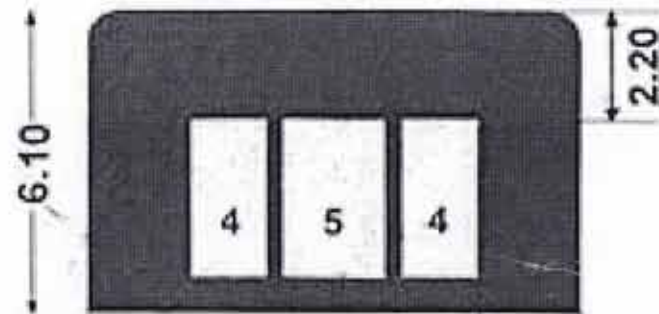
doorsnede E - F

671 - Geschutsbunker met centraal opgesteld geschut (120°) zonder nevenruimte



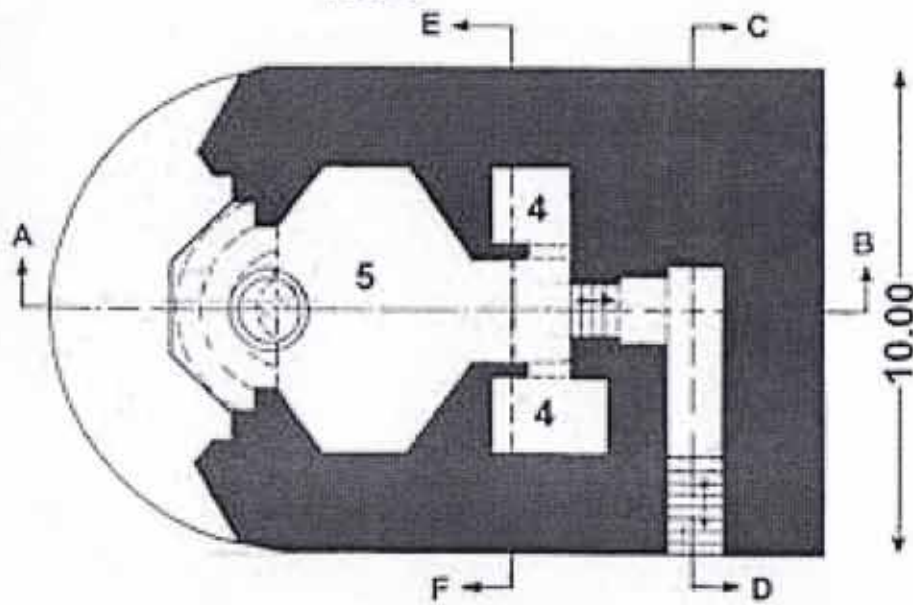
doorsnede A - B

16.00



doorsnede E - F

2.00



10.00

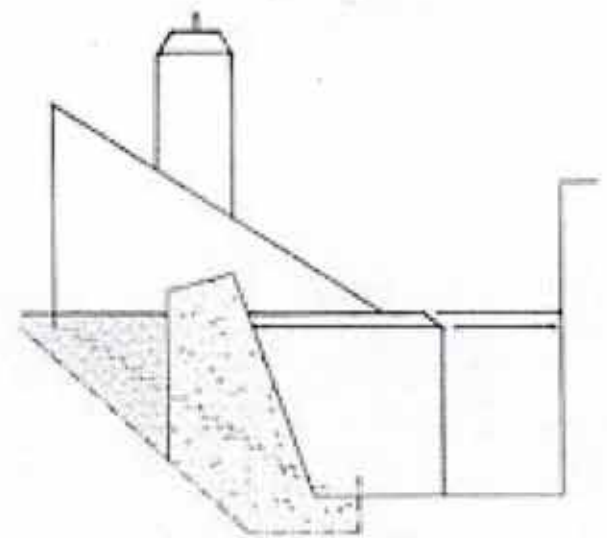
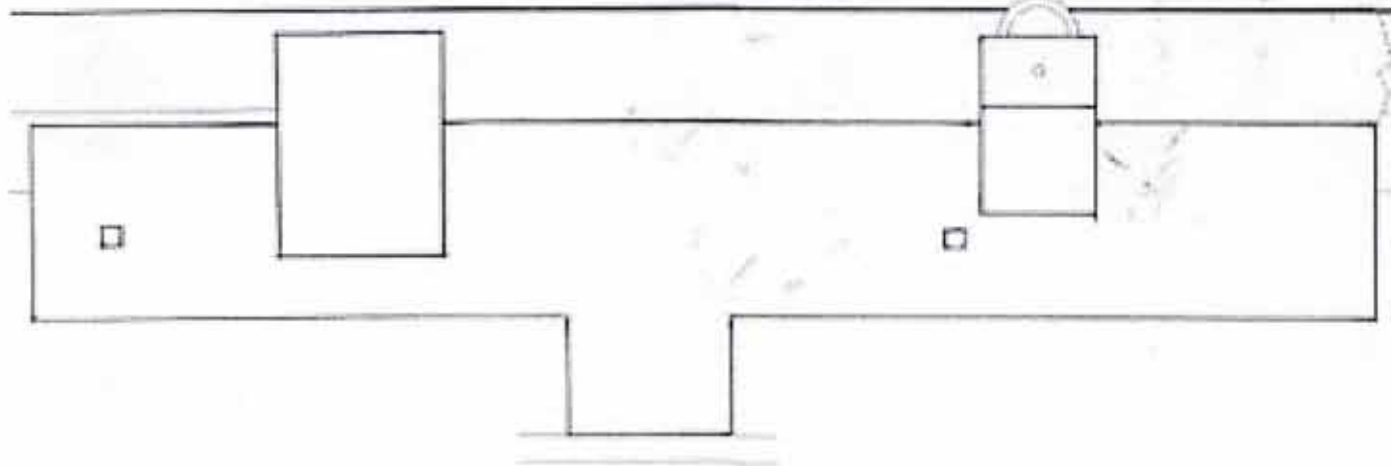
- 4. Munitiebergruimte
- 5. Geschutsruimte



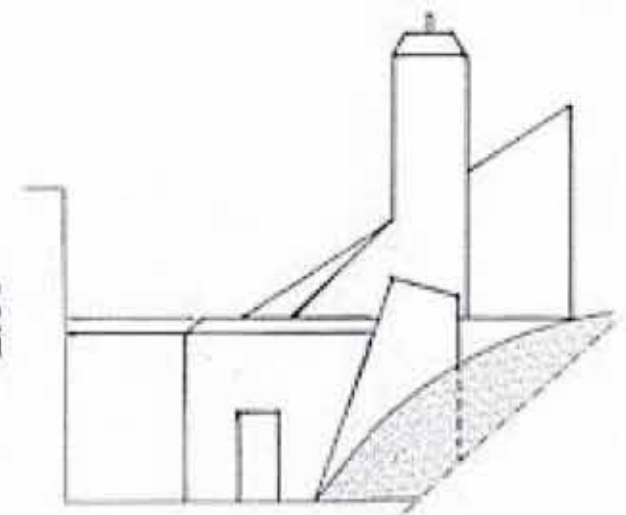
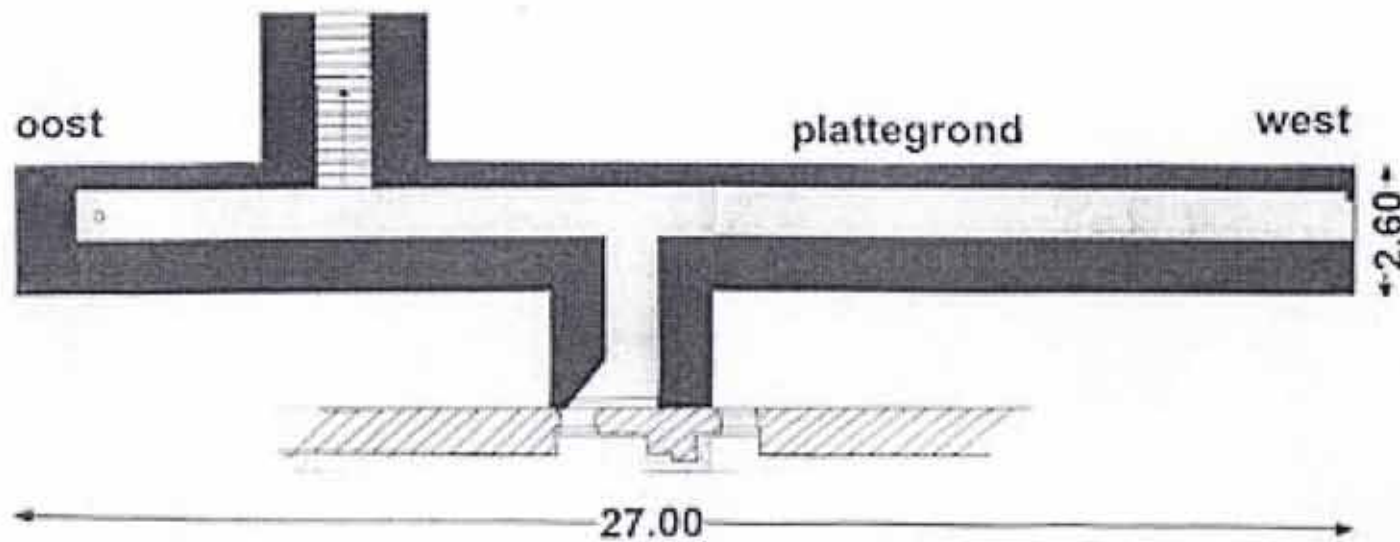
doorsnede C - D

Bronnengalerij

dakaanzicht

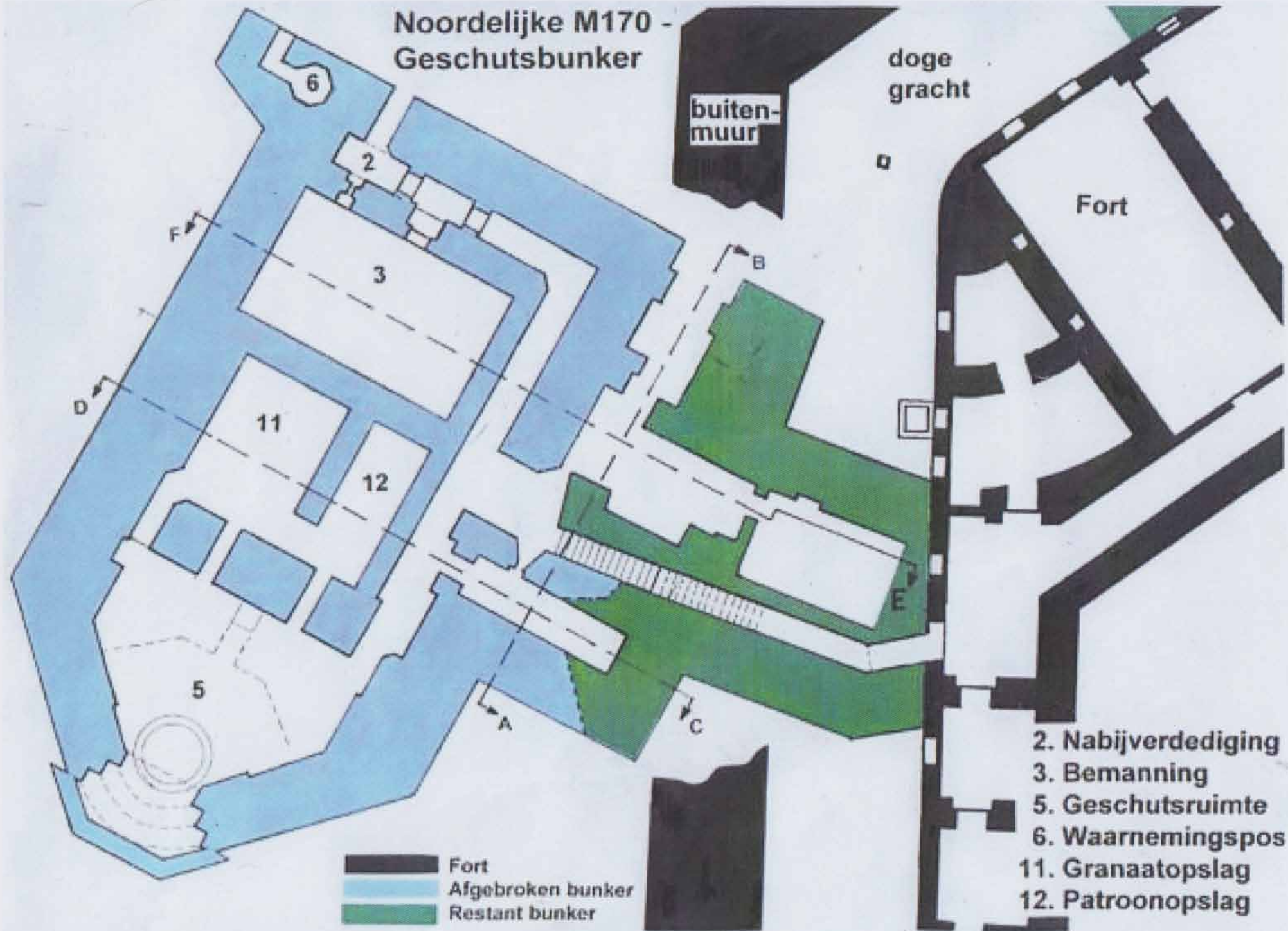


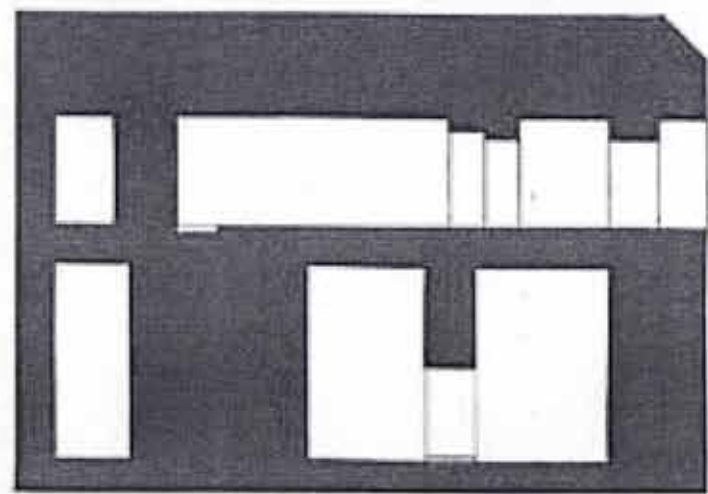
zijaanzicht west



zijaanzicht oost

Noordelijke M170 - Geschutsbunker



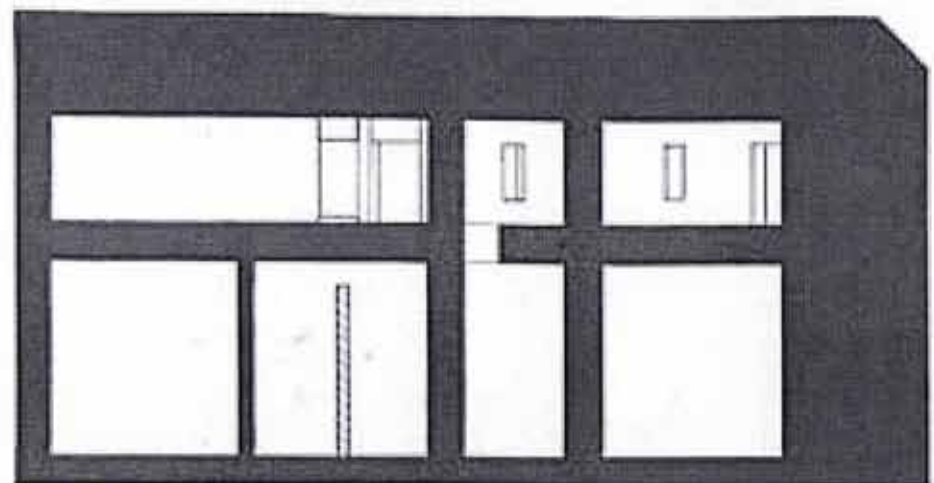


13.90

doorsnede A - B

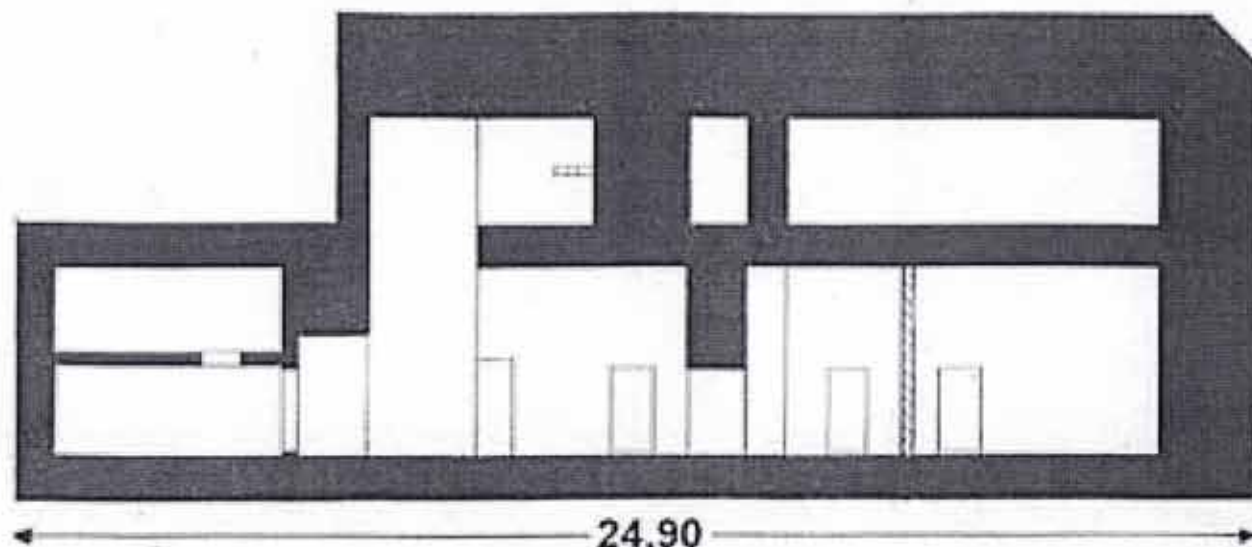


9.70



18.50

doorsnede C - D



24.90

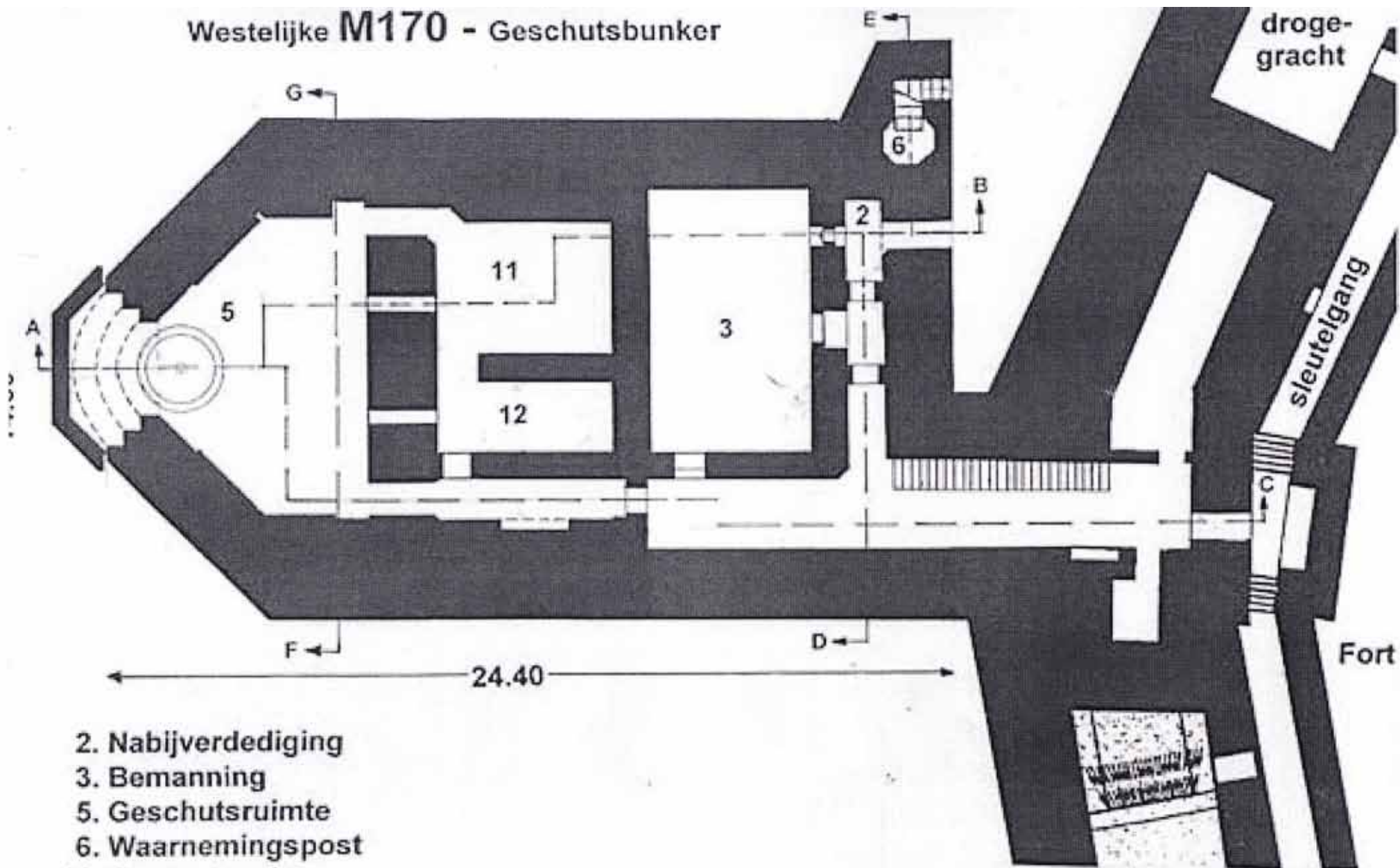
doorsnede E - F



9.70

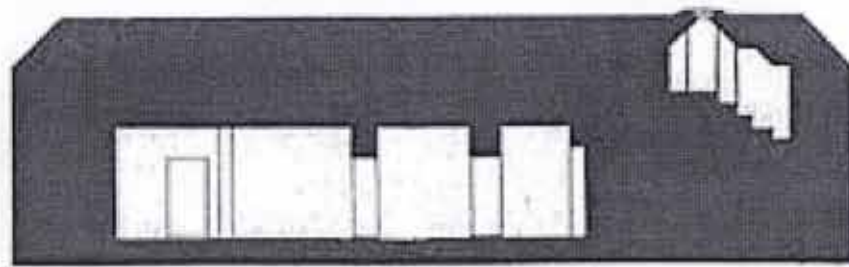
Noordelijke M170 -
Geschutsbunker
Dwarsdoorsneden

Westelijke M170 - Geschutsbunker

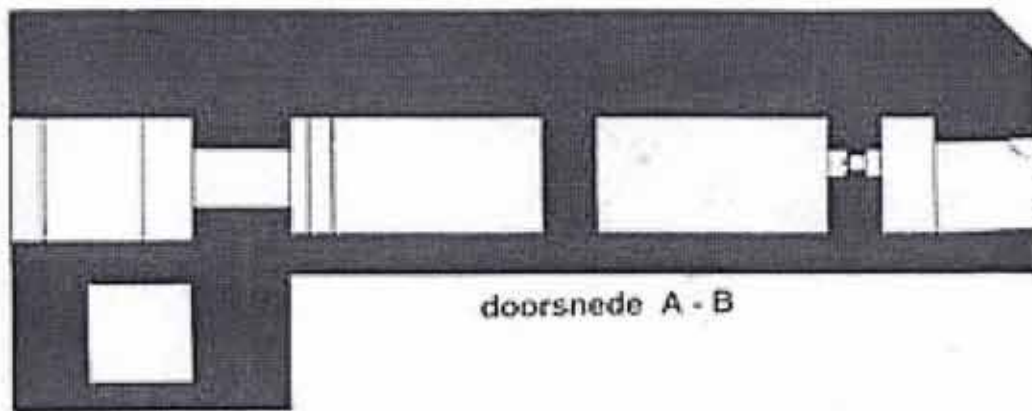


- 2. Nabijverdediging
- 3. Bemanning
- 5. Geschutsruimte
- 6. Waarnemingspost
- 11. Granaatopslag
- 12. Patroonopslag

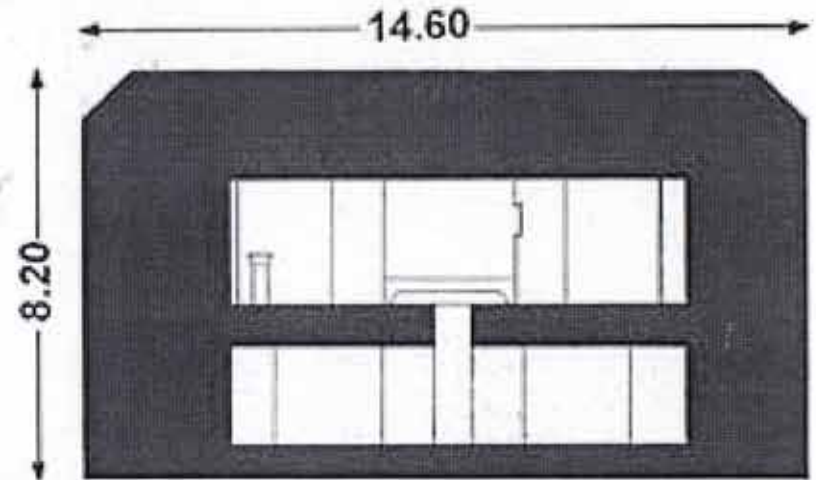
Westelijke M170 - Geschutsbunker
dwarsdoorsneden



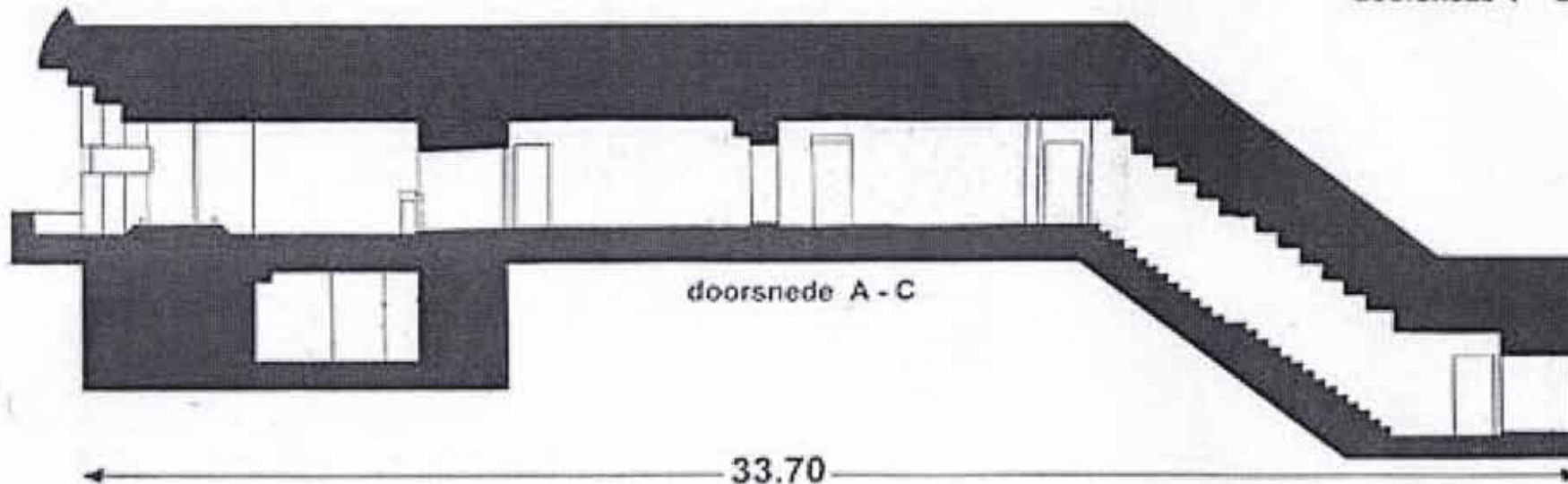
doorsnede D - E



doorsnede A - B



doorsnede F - G



doorsnede A - C

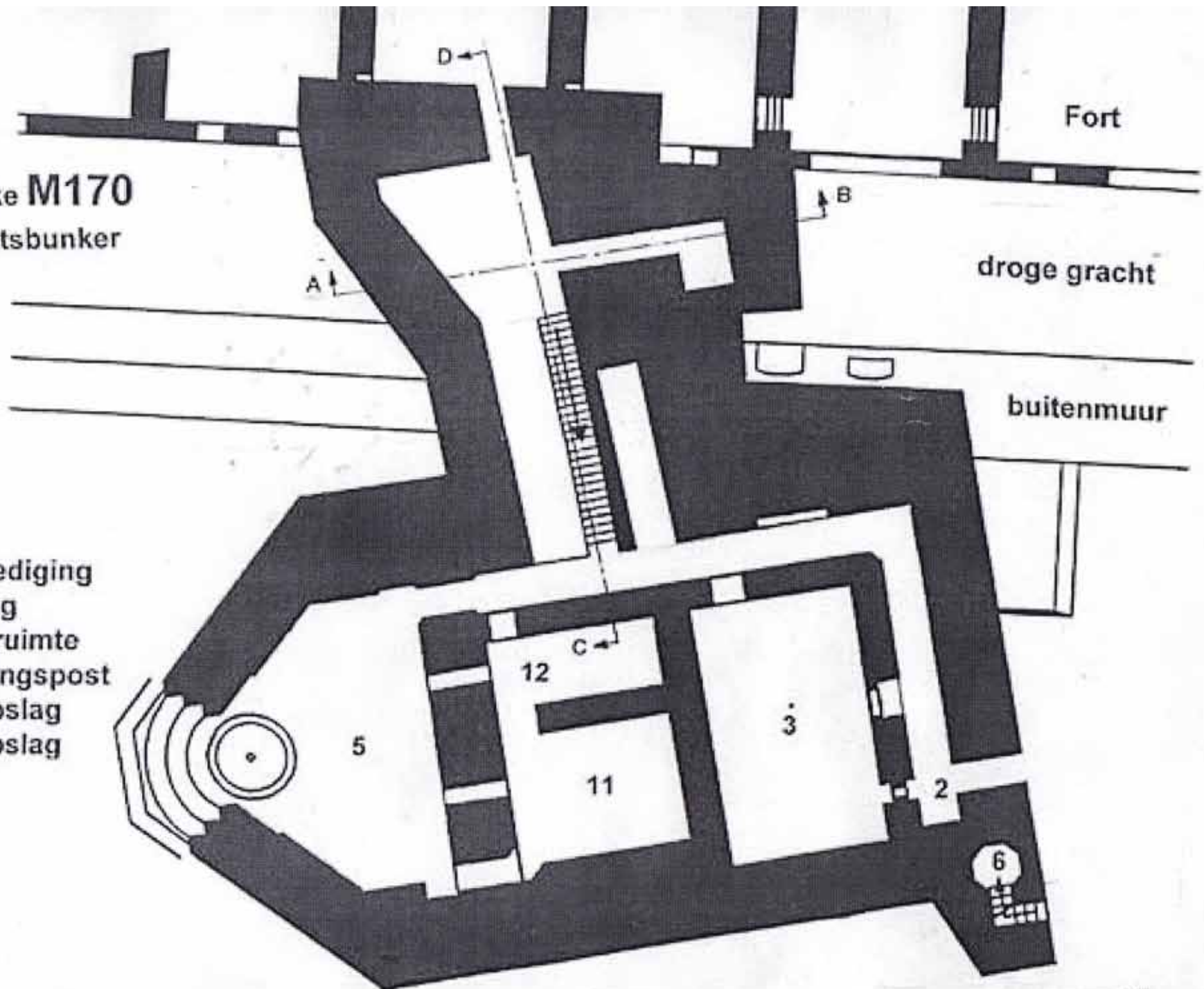
33.70

14.60

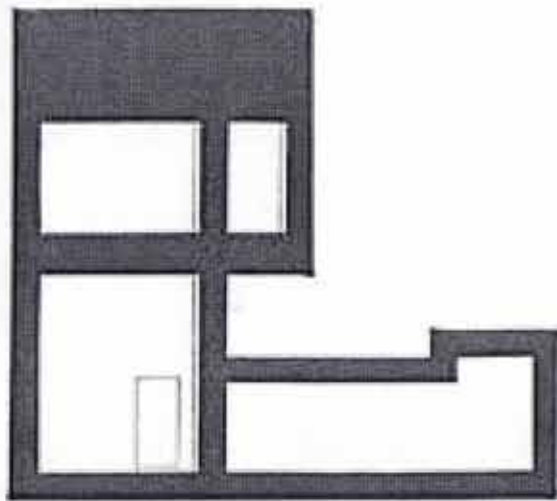
8.20

Zuidelijke M170
Geschutsbunker

- 2. Nabijverdediging
- 3. Bemanning
- 5. Geschutsruimte
- 6. Waarnemingspost
- 11. Granaatopslag
- 12. Patroonopslag

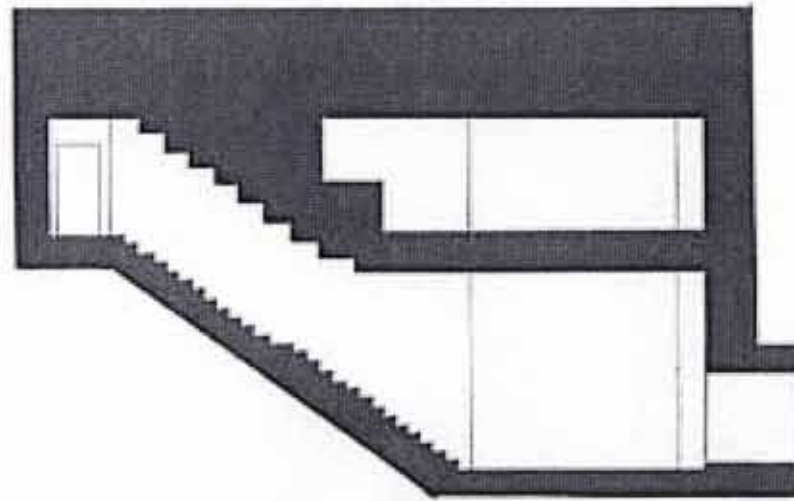


Zuidelijke M170 - Geschutsbunker
dwarsdoorsneden



doorsnede A - B

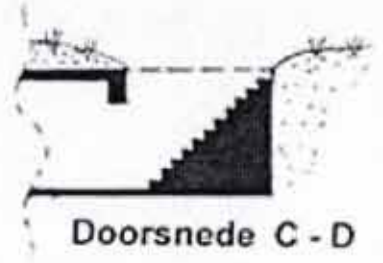
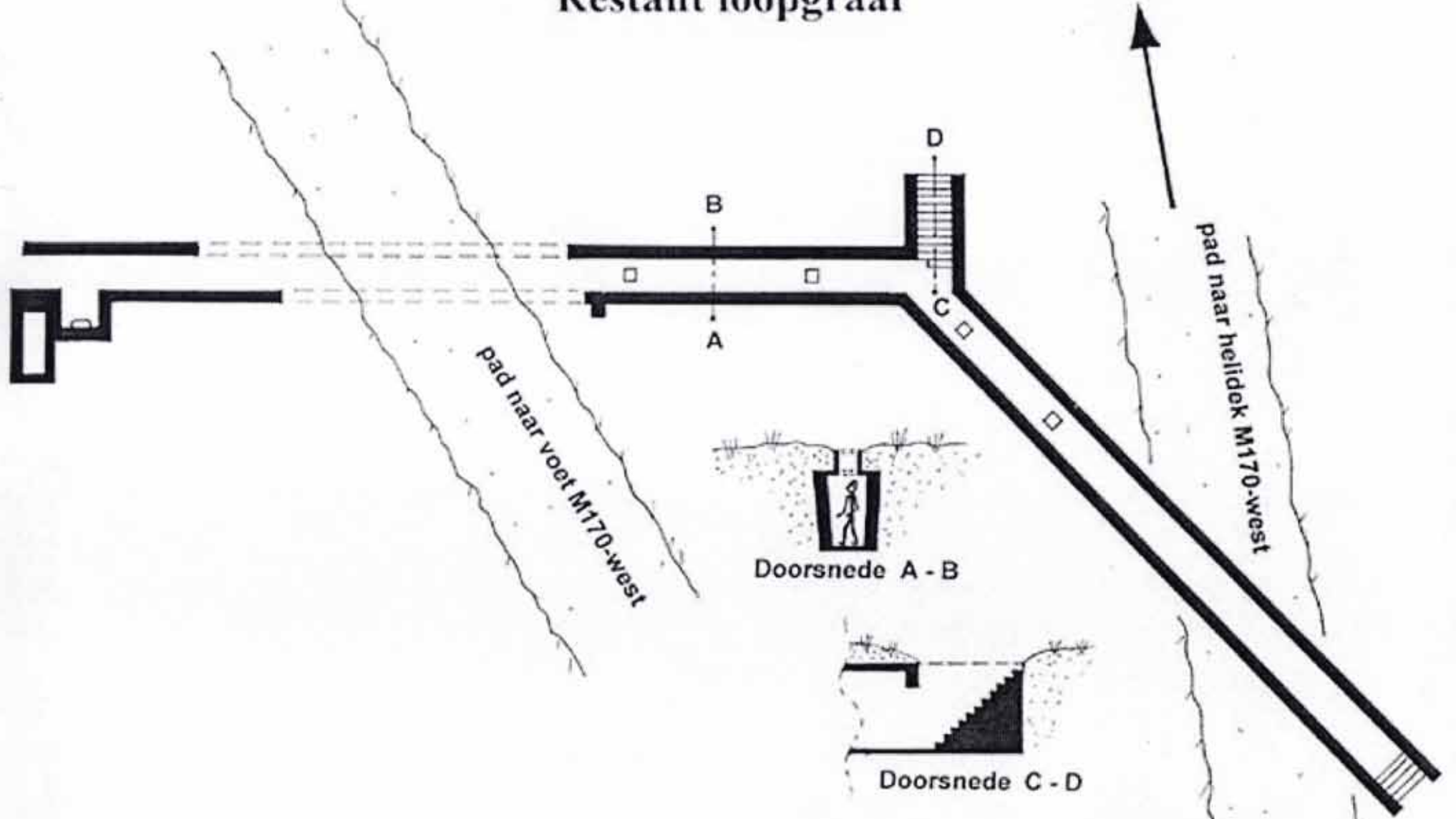
9.20



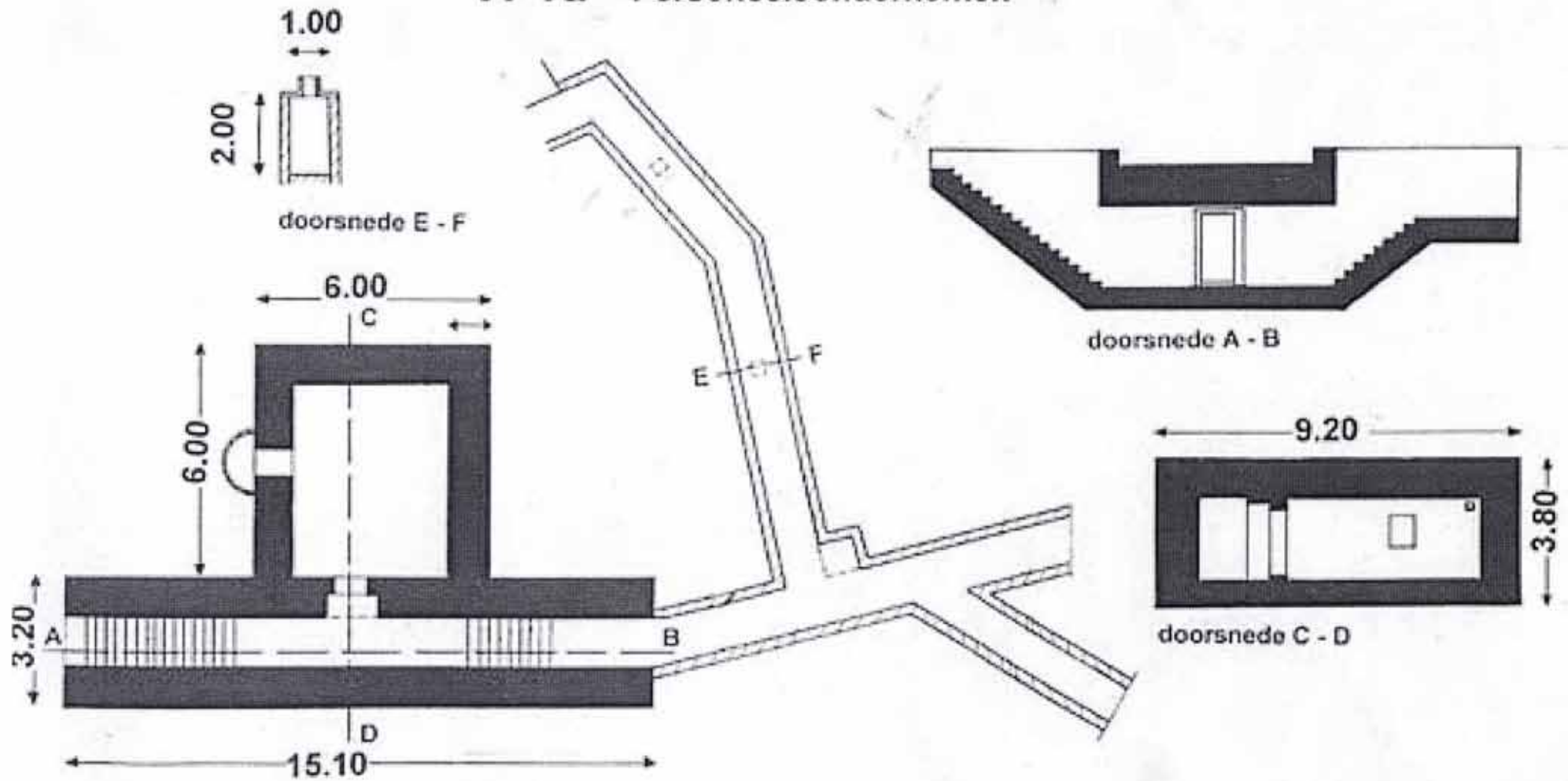
doorsnede C - D

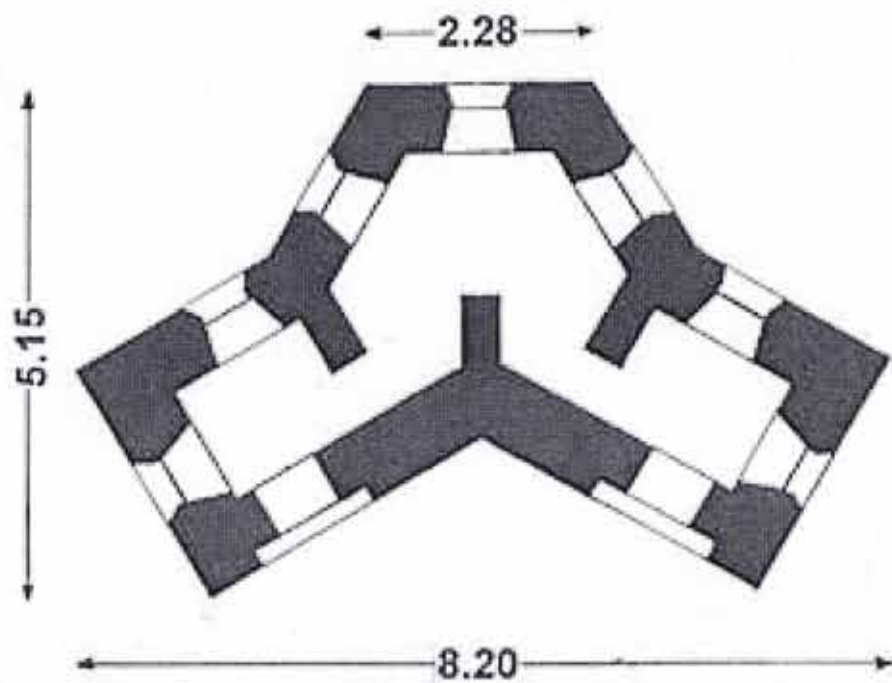
Restant loopgraaf

Noord



VF1a - Personeelsonderkomen





Nederlandse kazemat S-7-80,
Stekelvarken

